

**GROOVING INSERTS | POSITIVE RAKE
 THREADING INSERTS | POSITIVE RAKE**

STANDARD NOTCH INSERTS
 FOR GROOVING AND THREADING



NOTCH INSERTS COMPATIBILITY

Notch GNGP grooving inserts are interchangeable with other Notch grooving inserts, and also fit tools using the following insert types:

NG, NGP, NG-K

FLG, FLGP, FLG-CB

TLG, TLGP

Notch GNTP threading inserts are interchangeable with other Notch threading inserts, and also fit tools using the following insert types:

NT, NTP, NT-K

FLT, FLTP, FLT-CB

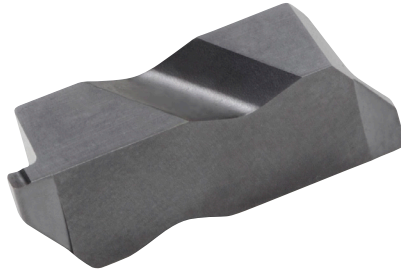
TLT, TLTP

STANDARD NOTCH INSERTS

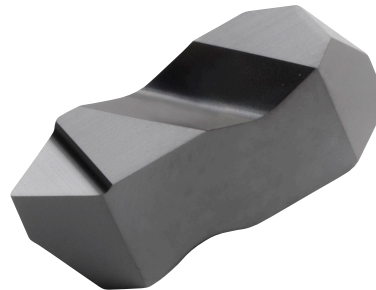
Precision ground for high performance and accurate indexing

Specialized edge treatment for extended tool life

5° positive rake - reduced cutting forces



General purpose grooving, O-ring grooves, Circlip grooves

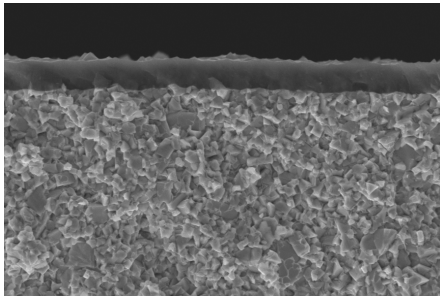


Two cutting edges per insert for economy

60° partial profile V-thread forms for a range of thread pitches

GM3125

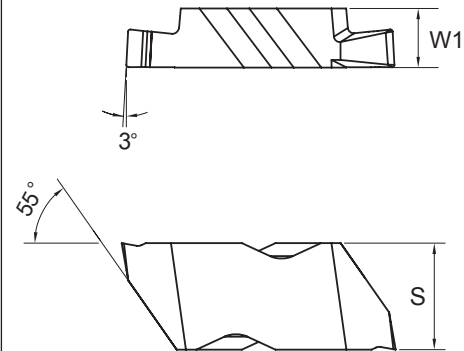
TiAlN Nano-Structure PVD Coated Grade



High resistance to thermal and mechanical shock, with exceptional wear resistance – provides superior performance in steel, stainless steel and cast iron materials.



NOTCH Insert Dimensions



Insert Size	W1	s
2	.150	.219
3	.195	.344

G	N	G	P	2	0	4	7	R
1		2	3	4	5			6


G	N	T	P	2	R
1		2	3	4	6

1	
Insert Type	
GN	NOTCH System

2	
Insert Style	
G	Grooving
T	Threading - 60° V-form

3	
Insert Characteristics	
P	Positive Rake

4	
Insert Size	
2	Notch size 2
3	Notch size 3

5	
Grooving Width	
	
Symbol indicates width W in thousandths of an inch	
Symbol	W (inch)
031	.031
047	.047
062	.062
078	.078
094	.094
125	.125
189	.189

6	
Hand of Insert	
R	Right-hand
L	Left-hand